

## 1.1 HUMAN RESOURCE

### 1.2.1 Population Levels and Growth Rates: Metropolitan Context

With a total population of 529,039, Makati ranked *ninth* in terms of population size among the 16 cities and one (1) municipality of Metro Manila based on the 2010 Census of Population and Housing. With the unprecedented rapid growth of the cities of Taguig and Pasig and steady growth of Parañaque and Caloocan during the 20-year period, the City fell from its *fourth* rank position in population size in 1990 to its current rank position. (Table 1) Makati posted a sluggish annual growth of 0.39% from 1990 to 2000, but has recovered eventually with an annual growth of 1.16% during the following ten-year period (2000-2010).

**Table 1. Total Population and Annual Population Growth Rates: NCR and Cities/Municipalities**

Region/City/ Municipality	Total Population			Annual Population Growth Rate (%)		
	1-May 2010	1-May 2000	1-May 1990	2000-2010	1990-2000	1990-2010
<b>Philippines</b>	92,337,852 <sup>a</sup>	76,506,928 <sup>b</sup>	60,703,810 <sup>c</sup>	1.90	2.34	2.12
<b>National Capital Region</b>	11,855,975	9,932,560	7,948,392	1.78	2.25	2.02
Quezon City	2,761,720	2,173,831	1,669,776	2.42	2.67	2.55
City of Manila	1,652,171	1,581,082	1,601,234	0.44	-0.13	0.16
Caloocan City	1,489,040	1,177,604	763,415	2.37	4.43	3.39
City of Pasig	669,773	505,058	397,679	2.86	2.42	2.64
Taguig City	644,473	467,375	266,637	3.26	5.77	4.51
City of Parañaque	588,126	449,811	308,236	2.72	3.85	3.28
City of Valenzuela	575,356	485,433	340,227	1.71	3.62	2.66
City of Las Piñas	552,573	472,780	297,102	1.57	4.75	3.15
<b>City of Makati *</b>	<b>529,039</b>	<b>471,379</b>	<b>453,170</b>	<b>1.16</b>	<b>0.39</b>	<b>0.78</b>
City of Muntinlupa	459,941	379,310	278,411	1.95	3.14	2.54
City of Marikina	424,150	391,170	310,227	0.81	2.34	1.58
Pasay City	392,869	354,908	368,366	1.02	-0.37	0.32
City of Malabon	353,337	338,855	280,027	0.42	1.92	1.17
City of Mandaluyong	328,699	278,474	248,143	1.67	1.16	1.41
City of Navotas	249,131	230,403	187,479	0.78	2.08	1.43
City of San Juan	121,430	117,680	126,854	0.31	-0.75	-0.22
Municipality of Pateros	64,147	57,407	51,409	1.12	1.11	1.11

Source: National Statistics Office, 1990 Census of Population and Housing, 2000 Census of Population and Housing and 2010 Census of Population and Housing ([www.census.gov.ph](http://www.census.gov.ph))

\* Makati's Population includes persons residing in the disputed areas with Taguig (PP Northside and PP Southside): 51,320 in 2010, 26,512 in 2000.

a. Includes 2,739 Filipinos in Philippine embassies, consulates, and missions abroad.

b. Includes 2,851 Filipinos in Philippine embassies, consulates, and missions abroad.

c. Includes 2,876 homeless population and 2,336 Filipinos in Philippine embassies, consulates, and missions abroad.

Like the City of Manila and the other seven (7) cities and one (1) municipality, Makati exhibited a decreasing percentage share to the NCR population, from 5.7% in 1990 down to 4.7% in 2000 and 4.5% in 2010. Caloocan City, Quezon City and Taguig City, meanwhile, exhibited the most significant increase in their percentage share to the total population of the metropolis with 3.0, 2.3 and 2.0 percentage points within the same 20-year period, respectively (Table 2).

**Table 2. Total Population and Percentage Share of City/Municipality to NCR**

Region/City/ Municipality	Total Population			Percent Share (%)		
	1990	2000	2010	1990	2000	2010
<b>National Capital Region</b>	7,948,392	9,932,560	11,855,975	100.0	100.0	100.0
Quezon City	1,669,776	2,173,831	2,761,720	21.0	21.9	23.3
City of Manila	1,601,234	1,581,082	1,652,171	20.1	15.9	13.9
Caloocan City	763,415	1,177,604	1,489,040	9.6	11.9	12.6
City of Pasig	397,679	505,058	669,773	5.0	5.1	5.6
Taguig City	266,637	467,375	644,473	3.4	4.7	5.4
City of Parañaque	308,236	449,811	588,126	3.9	4.5	5.0
City of Valenzuela	340,227	485,433	575,356	4.3	4.9	4.9
City of Las Piñas	297,102	472,780	552,573	3.7	4.8	4.7
<b>City of Makati *</b>	<b>453,170</b>	<b>471,379</b>	<b>529,039</b>	<b>5.7</b>	<b>4.7</b>	<b>4.5</b>
City of Muntinlupa	278,411	379,310	459,941	3.5	3.8	3.9
City of Marikina	310,227	391,170	424,150	3.9	3.9	3.6
Pasay City	368,366	354,908	392,869	4.6	3.6	3.3
City of Malabon	280,027	338,855	353,337	3.5	3.4	3.0
City of Mandaluyong	248,143	278,474	328,699	3.1	2.8	2.8
City of Navotas	187,479	230,403	249,131	2.4	2.3	2.1
City of San Juan	126,854	117,680	121,430	1.6	1.2	1.0
Municipality of Pateros	51,409	57,407	64,147	0.6	0.6	0.5

Source: NSO, 1995 Census of Population, 2000 Census of Population and Housing and 2007 Census of Population ([www.census.gov.ph](http://www.census.gov.ph))

\* Makati's Population includes persons residing in the disputed areas with Taguig (PP Northside and PP Southside): 51,320 in 2010 and 26,512 in 2000.

### 1.2.2 Population Levels and Growth Trends: Makati City and its Barangays

The first census of population conducted in 1903 recorded a total of only 2,700 inhabitants in Makati. The town's population grew fast and steadily at 10.82% annually until the end of year 1918. Population growth rates exhibited a fluctuating but positive trend from then on until 1995. The unprecedented increase in the population experienced during the period 1960-1970 was attributed to massive in-migration of people to Makati as it became the center of business and commercial activities in the country.

During the period 1995-2000, however, historical data shows a significant reduction in the City's population, and thus a tremendous drop in the growth pattern registering a negative annual growth of 0.57% during the 5-year period. The growth rate picked up during the following 7-year period at 2.12% per annum, but dived again at -1.34% per annum between 2007 and 2010. As

of 2010, Makati's population stood at 529,039, a level which is 196 times the population count in 1903 (Table 3).

**Table 3. Intercensal Annual Population Growth Rate**

Census Date	Total Population	Intercensal Increase/ Decrease	% Increase/ Decrease	Annual Growth Rate (%)
March 2, 1903	2,700	-	-	-
December 31, 1918	12,612	9,912	367	10.82
January 1, 1939	33,530	20,918	166	4.77
October 1, 1948	41,335	7,805	23	2.35
February 15, 1960	114,540	73,205	177	8.86
May 6, 1970	264,918	150,378	131	8.75
May 1, 1975	334,448	69,530	26	4.77
May 1, 1980	372,631	38,183	11	2.19
May 1, 1990	452,734	80,103	21	1.98
September 1, 1995	484,176	31,442	7	1.25
May 1, 2000	471,379	-12,797	-3	-0.57
August 1, 2007	548,983	77,604	16	2.12
May 1, 2010	529,039	-19,944	-4	-1.34

Source: National Statistics Office ([www.census.gov.ph](http://www.census.gov.ph))

Note: Makati's Population includes persons residing in the disputed areas with Taguig (PP Northside and PP Southside): 51,320 in 2010, 56,966 in 2007, 26,512 in 2000, and 23,274 in 1995.

### 1.2.3 Daytime Population

Considered the City's night-time population is the registered resident population of 548,983 in 2007, and 529,039 in 2010. Makati's daytime-population ratio has been estimated at a minimum of 3.2 M to a maximum of 4.2 M in 2010 – that is, the population of Makati during daytime on ordinary weekday is 6 to 8 times of its night-time population as shown in the Table 4.

**Table 4. Estimates of Daytime - Population Ratio, 2010**

Particulars	Population Count
Annual Average Daily Traffic (AADT) (2011)	2,700,000
Annual Growth of Traffic in Makati City for the last 15 years	3.10%
Factor to convert 2011 AADT to 2010	96.9%
AADT 2010 = (2,700,000 x 0.969)	2,616,300
Vehicles which stayed in Makati City	22%
Passing Through Traffic	78%
Year 2010 AADT, vehicle /day (those who stayed at Makati)	575,586

**Table 4. Estimates of Daytime - Population Ratio, 2010 (cont...)**

Particulars	Population Count
Year 2010 AADT, vehicle/day (those who passed thru Makati)	
Vehicle composition:	
(55% cars; 25% jeepneys; 6% buses; 14% truck or goods' vehicles)	2,040,714
Estimated number of daytime populations based on average occupancy rate	3,054,635
Net Population via Rail who will not transfer to jeepneys or buses	21,139
Net Population via Rail who will not take any form of motorized transport	82,324
<b>Total Minimum Daytime Population</b>	<b>3,158,098</b>
Passing Thru Passengers (10% of passing thru passengers)	1,083,007
<b>Total Maximum Daytime Population</b>	<b>4,241,105</b>

Source: Makati City Transportation Study, 2012

#### 1.2.4 Population Distribution and Density

The population and land distribution presented in Figure 1 and Table 5 illustrates the wide disparities in population concentration across the barangays. Aggregately, 42.2% of the City's population in 2010 were residing in District I, which accounted for the 61.8% of the City's total land area. Meanwhile, the remaining 38.2% of the City's total land area (District II) was being occupied by the other 57.8% of its total population.

Overall, the average population density of the City was estimated at 19 persons per 1,000 square meters as of 2010. The City, which has most densely populated barangays, or those with more than 70 residents per 1,000 square meters, were Pembo, Rizal, Pitogo and South Cembo, all of them comprising the District II area. The top three most densely populated barangays in the District I area, on the other hand, were Singkamas (57 persons/1,000 sq. m.), Kasilawan (56 persons/1,000 sq. m.) and Tejeros (49 persons/1,000 sq. m.).

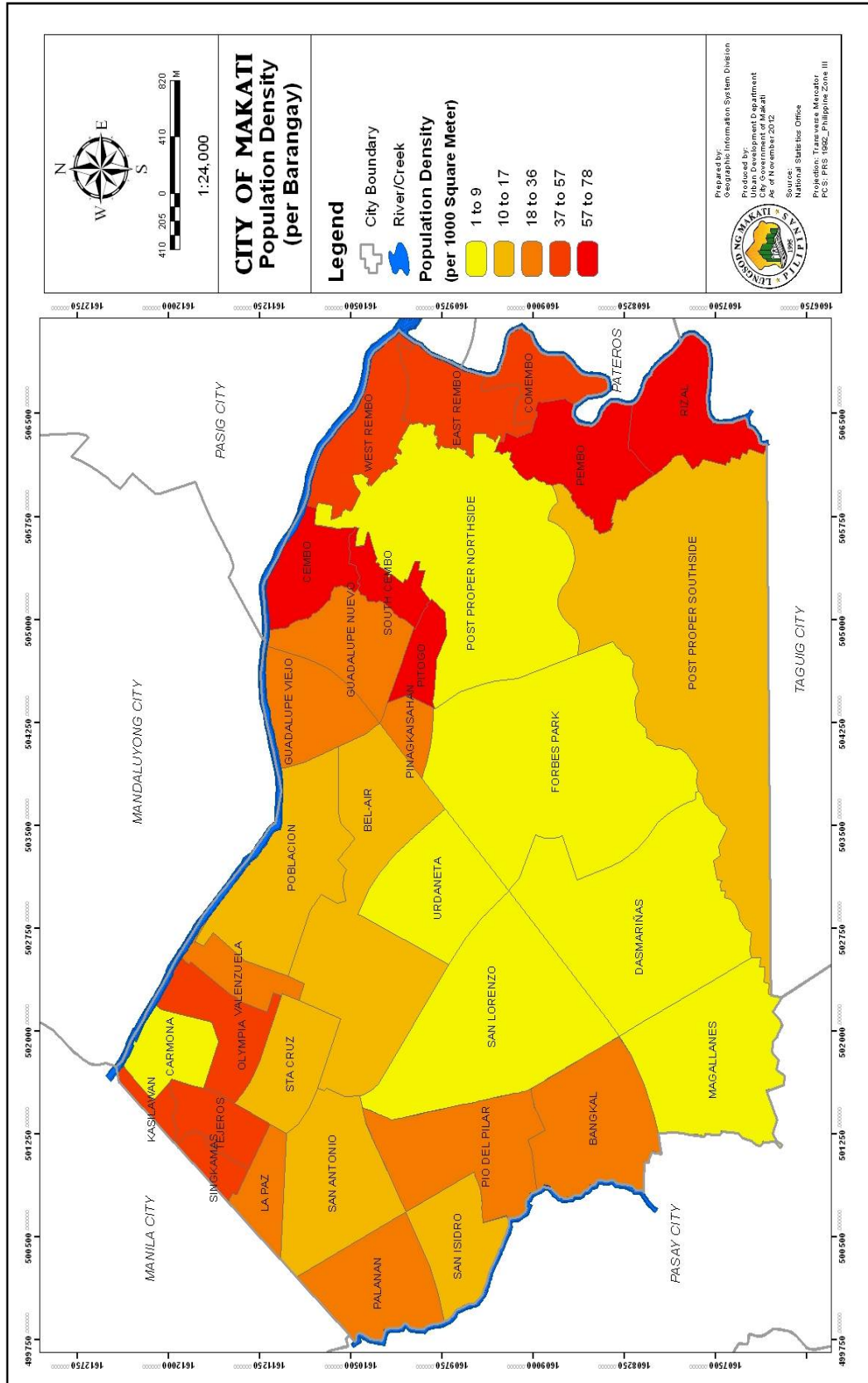


Figure 1: Population Density Map, 2010

**Table 5. Population Distribution and Gross Population Density by Barangay, 2010**

Barangay	Population	% Share	Land Area in Square Meters	% Share	Population Density per 1,000 Square Meters
<b>District I</b>					
Bangkal	23,378	4.40%	875,900	3.20%	27
Bel-Air	18,280	3.50%	1,712,100	6.30%	11
Carmona	3,096	0.60%	352,900	1.30%	9
Dasmariñas	5,654	1.10%	1,903,300	7.00%	3
Forbes Park	2,533	0.50%	2,500,000	9.10%	1
Kasilawan	5,291	1.00%	94,600	0.30%	56
La Paz	7,931	1.50%	247,800	0.90%	32
Magallanes	5,576	1.10%	1,199,500	4.40%	5
Olympia	21,270	4.00%	456,500	1.70%	47
Palanan	17,283	3.30%	649,900	2.40%	27
Pio del Pilar	27,035	5.10%	880,900	3.20%	31
Poblacion	17,120	3.20%	1,034,200	3.80%	17
San Antonio	11,443	2.20%	895,800	3.30%	13
San Isidro	7,589	1.40%	482,900	1.80%	16
San Lorenzo	10,006	1.90%	1,734,100	6.30%	6
Singkamas	7,426	1.40%	129,300	0.50%	57
Sta. Cruz	7,440	1.40%	473,000	1.70%	16
Tejeros	13,868	2.60%	283,200	1.00%	49
Urdaneta	3,717	0.70%	739,900	2.70%	5
Valenzuela	7,261	1.40%	251,400	0.90%	29
<b>Sub Total</b>	<b>223,197</b>	<b>42.20%</b>	<b>16,897,200</b>	<b>61.80%</b>	<b>13</b>
<b>District 2</b>					
Cembo	27,998	5.30%	426,700	1.60%	66
Comembo	14,433	2.70%	309,000	1.10%	47
East Rembo	26,433	5.00%	481,100	1.80%	55
Guadalupe Nuevo	18,271	3.50%	570,400	2.10%	32
Guadalupe Viejo	16,411	3.10%	540,400	2.00%	30
Pembo	44,803	8.50%	639,800	2.30%	70
Rizal	41,959	7.90%	594,700	2.20%	71
Pinagkaisahan	5,804	1.10%	160,300	0.60%	36
Pitogo	15,332	2.90%	195,500	0.70%	78
Post Proper Northside*	6,010	1.10%	2,376,000	8.70%	3
Post Proper Southside*	45,310	8.60%	3,412,000	12.50%	13

\* Disputed Barangays

**Table 5. Population Distribution and Gross Population Density by Barangay, 2010**  
(cont...)

Barangay	Population	% Share	Land Area in Square Meters	% Share	Population Density per 1,000 Square Meters
South Cembo	14,672	2.80%	200,000	0.70%	73
West Rembo	28,406	5.40%	552,500	2.00%	51
<b>Sub Total</b>	<b>305,842</b>	<b>57.80%</b>	<b>10,458,500</b>	<b>38.20%</b>	<b>29</b>
<b>Grand Total</b>	<b>529,039</b>	<b>100.00%</b>	<b>27,355,700**</b>	<b>100.00%</b>	<b>19</b>

Source: NSO, 2010 Census of Population and Housing ([www.census.gov.ph](http://www.census.gov.ph));  
Makati Urban Development Department for Land Area

\* Disputed Barangays with Taguig.

\*\* Including the Military Reservation (4,402,700 square meters)

### 1.2.5 Labor Force

On the whole, 60% of Makati's working age population (15-64 years old) in 2007 was engaged in gainful occupation. A person is considered a *gainful worker* or usually working most of the time if he/she worked for at least ten hours a week for six (6) months or longer during the last twelve months preceding the interview (NSO, NSCB definition). He/she may be working for pay; for profit in his/her own farm, business, private practice of a profession or trade; or without pay on his/her own family farm or business .

A bigger proportion of the male population in the working age bracket was engaged in gainful occupation compared to their female counterpart in 2007 – that is, 70% versus 51% (Table 6).

**Table 6. Working-Age Population and Gainful Workers 15 Years Old and Over, by Sex**

	Both Sexes	Male	Female
Population 15-64 Years Old	378,720	173,132	205,588
Gainful Workers 15 Years Old and Over	227,068	121,777	105,291
Percent of Gainful Workers to Working-Age Population	<b>60.0%</b>	<b>70.3%</b>	<b>51.2%</b>

Source: NSO, 2007 Census of Population (Special tabulation requested from NSO)

Majority, or 69% of Makati's 2007 total population engaged in gainful occupation are working within the City in 2007. Almost a quarter of the City's working population was working in other cities/municipalities of NCR and nearby provinces of Southern Tagalog and Central Luzon regions. More males (33%) than females (24%) were likely to work outside their city of residence as shown by the data (Table 7).

**Table 7. Gainful Workers 15 Years Old and Over by Sex and Place of Work**

Place of Work	Both Sexes		Male		Female	
	Number	%	Number	%	Number	%
<b>Gainful Workers 15 Years Old and Over</b>	<b>227,068</b>	<b>100.0</b>	<b>121,777</b>	<b>100.0</b>	<b>105,291</b>	<b>100.0</b>
Same City	155,993	68.7	79,208	65.0	76,785	72.9
Other City/Municipality within NCR	17,913	7.9	11,024	9.1	6,889	6.5
Other City/Municipality outside NCR	34,826	15.3	20,800	17.1	14,026	13.3
Foreign Country	12,337	5.4	8,101	6.7	4,236	4.0
Unknown	5,999	2.6	2,644	2.2	3,355	3.2

Source: NSO, 2007 Census of Population (Special tabulation requested from NSO)